



Dear Alumni Brother,

Greetings from the Collegiate Brothers of the Epsilon Sigma Chapter of Sigma Nu at Rhodes College! My name is Nate Mahoney, and I am the interim Alumni Relations Chairman of the Chapter taking over for Brendan Finley while he is abroad. All of us hope you and your family have a wonderful Thanksgiving holiday in store. This is the first installment of the Chapter's bi-annual Semester Chapter Report for the 2008-2009 school year and we are very excited to be sharing some great news with you concerning the growth of our Chapter.

This newsletter is meant to serve as a transition from previous newsletters, in that we are transforming it into a more alumni-based forum. Included with this letter you will also find letters from the Epsilon Sigma Alumni Chapter and Epsilon Sigma Alumni Advisory Board. We hope you read on to learn more about the recent successes of the Chapter and consider becoming involved with the Chapter and/or joining us at future events.

Much has happened since the last Semester Chapter Report was sent out in the spring: continuing with a tradition of excellence in scholarship, the brothers of Sigma Nu posted yet another strong semester academically; the Chapter House has been the object of immense change and improvement; and our values-based recruitment plan outlined in the LEAD programs has seen the success of a very robust pledge class. We are very proud of such achievements and we hope you read on to learn more!

Rush 2008

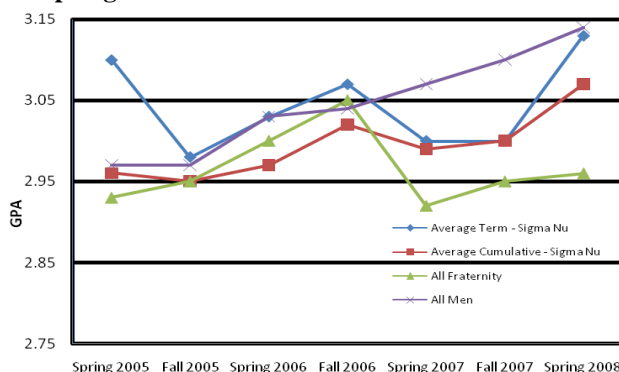
This semester as Marshal I have focused the pledgship firmly around the LEAD program with greater emphasis on what it means to be an honorable man. I have also worked closely with Alumni Advisory Board Member Rob McCleary (III 38), who has helped facilitate three LEAD sessions focusing on how to act as a man of honor and the meaning of living ethically. Other LEAD sessions have centered on fraternity information and the history of Sigma Nu, which gives the pledge class a better sense of where our traditions originate. This pledge class is one of the largest in recent history containing twelve men who have diverse backgrounds and experiences which will help to shape Epsilon Sigma in the future. I look forward to welcoming these pledges into our Chapter and have the greatest confidence that they will be instrumental in making Epsilon Sigma a strong and lasting organization.

*Erik Davis '10
Marshal*



Top Row: Rush Brady, James Chang, Jack Huldin, Stan Badger. Middle Row: Fulton Byrne, Max Hardy, Matt McCulloch, Will Lang. Bottom Row: Nick Badger, John Wells, John Payne, Andrew Bell

Spring 2008 Grades



This past spring, the Active Chapter continued its trend of strong academic achievement, receiving average semester and average cumulative GPAs of 3.13 and 3.07, respectively. A New emphasis of the LEAD program contributed to the Chapter's continued academic success, and we are all looking forward to continued progress in the future.



House Improvements

The Active Chapter has worked very hard to improve the house both structurally and aesthetically. In the basement we have repainted all rooms, and re-patched blemishes in the drywall. On the main floor we have touched up last summer's paint job, painted both stairwells, retiled the bathroom floor, and hung up curtains in the Goodbar Morgan room. We have also re-landscaped outside flower beds and worked with Rhodes Physical Plant to become the first fraternity to offer recycling bins inside. We have benefitted a great deal from the recent increase in alumni support and hope to promote continued alumni involvement through the Alumni Chapter.

Alex McWhirter '10
House Chairman



Recruitment 2008



This past spring the Chapter was visited by Alex Wyatt (KΠ 341, A 539), a Recruitment Advisor from Sigma Nu Headquarters, who spent time helping our Recruitment Committee form a year-round, values-based recruitment plan. The plan aims to recruit young men who are campus leaders and are looking to make an impact on both the Epsilon Sigma Chapter as well as the Rhodes Community. In order to reach the proper audience of young men in this past Fall Recruitment, we strayed away from constant parting, and focused, instead, on holding events where we were able to evaluate the character of the young men and ensure that we chose the right individuals to become part of Sigma Nu. Our final fall recruitment event was an alumni dinner held at the home of Rush Waller '83, which proved to be a great success. We hope to include more alumni events during future recruitment periods, and hope that our alumni relations continue to grow in the positive direction they are headed.

Ben Waller '11
Recruitment Chairman

We hope you found this newsletter informative and consider becoming involved with the Chapter and/or joining us at future events. On behalf of Epsilon Sigma, we wish you a very pleasant holiday season and the best wishes for the future.

Fraternally,

Nate Mahoney
Epsilon Sigma 1089
Alumni Relations Chairman



SIGMA NU FRATERNITY
EPSILON SIGMA ALUMNI ADVISORY BOARD

227 SOUTH McLEAN BOULEVARD • MEMPHIS, TENNESSEE • 38112

November 20, 2008

Dear Brothers,

A vital function of a healthy Alumni Chapter is advising the Active Chapter and mentoring collegiate brothers. With this in mind, the Epsilon Sigma Alumni Advisory Board (AAB) was recently commissioned. The overriding purpose of the AAB is to provide guidance to the Active Chapter. AAB Members commit to mentoring one or more Active Chapter officer(s) as well as periodic attendance at Active Chapter meetings and other Chapter events.

The Epsilon Sigma AAB consists of Tim Gibson (HΣ 358), Bud Richey (HZ 169 A 260), Rob McLeary (III 38), Britt Summers (EΣ 877), Rush Waller (EΣ 693), and Stephen Haynes (Σ 1358). Current AAB Members are engaged in helping the Active Chapter more clearly link its on-campus identity with the fraternity's mission statement. Serving in such capacity is not without benefits, including staying plugged in at Rhodes, on-going interaction with its exemplary students and future leaders, and contributing to preservation of the Chapter's legacy and the welfare of the general fraternity.

Consider Sigma Nu—For Life

The creed rings truer now for me than it did nearly twenty years ago. It speaks to a life lived well with hope, humility, and purpose. As I reflect on my collegiate days, it seems almost folly that adolescents like myself were entrusted with such a charge as this. Yet such was and is the call of Sigma Nu to boys aspiring to manhood. It is a proud heritage on which the bonds of fraternity were forged for me, for you, and for thousands of others over the decades. Consider the lessons of Love, Truth, & Honor in your own life, then consider involvement with Epsilon Sigma, a chapter in your area, or with the national fraternity.

Local alumni interested in becoming involved with the Epsilon Sigma AAB should contact Britt Summers (brittsummers@gmail.com or 901-274-7777).

Fraternally,

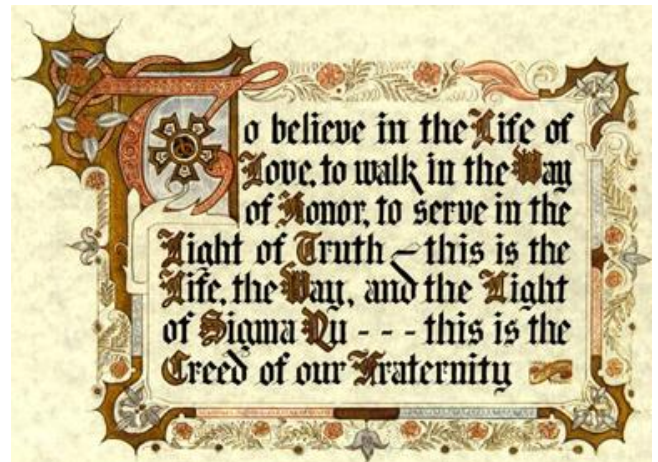
Britt Summers
Epsilon Sigma 877
Chairman, Epsilon Sigma Alumni Advisory Board

The Mission of Sigma Nu Fraternity

To develop ethical leaders inspired by the principles of Love, Honor, and Truth.

To foster the personal growth of each man's mind, heart, and character.

To perpetuate lifelong friendships and commitment to the fraternity.





SIGMA NU FRATERNITY
EPSILON SIGMA ALUMNI CHAPTER

C/O BRIAN BOONE, WORTHY TREASURER • 4057 ALLISON AVENUE • MEMPHIS, TENNESSEE • 38122

November 20, 2008

Dear Brothers,

In the year since the chartering of the Epsilon Sigma Alumni Chapter, we have witnessed the Active Chapter sustain a level of progress that has been nothing short of outstanding. Through the increased use of the LEAD Program as well as Values Based Recruitment, the Active Chapter has nearly doubled its membership, and—even more impressively—has attained an average *cumulative* GPA above a 3.0!

The Active Chapter has clearly aligned itself with the ideals of Sigma Nu and has worked hard to ensure that we can all be proud of our association with the Epsilon Sigma Chapter.

Indeed, as a testament to change that has taken place, many of you who attended the 2008 Homecoming Celebration took the opportunity to remark about the transformed appearance of the Chapter House, and the well-mannered and cordial reception given to all visitors by the current actives and pledges.

As we join together to congratulate the collegians on their recent success, let us take a moment to recognize the important role that increased alumni support and guidance has played in the Chapter's development.

Since the Alumni Chapter's chartering, the Alumni Chapter officers have made a concerted effort to organize individuals from our alumni base who have been willing and able to invest their time and energy in the Chapter, and allocate any donated monies in the most responsible manner.

In addition to forming an Alumni Advisory Board for the collegians, the Alumni Chapter has helped fund several critical House improvement projects initiated by the Active Chapter, has helped the Active Chapter fund its alumni events, and has established visibility on the national level through representation at the 63rd Grand Chapter held in Austin, Texas, in July 2008.

We are now in a position to begin working with the collegians to bridge Active and Alumni Chapter affairs. On the eve of the Chapter's 75th Anniversary, I along with the other Alumni Chapter officers and the members of the Alumni Advisory Board are proud to serve the Alumni Chapter and are truly privileged to work with such an outstanding group of young men.

Gentlemen, now is the time to renew your commitment to Sigma Nu! If you have not already done so, please take a few minutes to complete the Alumni Update Form included with this letter and consider joining the Alumni Chapter to show your support of our efforts.

Many of you have already joined us and we thank you for your generous support. Together, we will continue on the path towards Chapter excellence today and far into the future.

Fraternally,

John Gehrig
 Epsilon Sigma 1062
 Worthy Commander, Epsilon Sigma Alumni Chapter

Alumni Chapter Officers (2007-2009)

John Gehrig	Worthy Commander
Mac McWhirter	Worthy Lt. Commander
Brian Boone	Worthy Treasurer
Bill Pendergrass	Worthy Recorder

2007-2008 Alumni Chapter Members

John Allen	EΣ 184
Brian Boone	EΣ 980
James Augustine	EΣ 801
Charles Cobb	EΣ 81
HL Cornish	EΣ 337
Jeff Davis	EΣ 722
John Gehrig	EΣ 1062
Matthew Ian John	EΣ 906
Stephen Logan	EΣ 814
Rob McCleary	III 38
Mac McWhirter	EΣ 549
R. Christy Morgan	EΣ 162
Jim Moss	EΣ 509
Randall Mullins	EΣ 510
Bill Pendergrass	EΣ 474
Paul Plekon	EΣ 1043
Randy Rhea	EΣ 610
Bud Richey	HZ 169, A 260
Jim Riggan	EΣ 451
Chad Schultz	EΣ 798
Bill Short	EΣ 515
Britt Summers	EΣ 877
Christian Waddell	EΣ 878
Rush Waller	EΣ 693
Jay Wills	EΣ 585
Joseph Woodley	EΣ 649
Matthew Witt	EΣ 1055

Brothers, A Mighty Oak Has Fallen!

Virgil Starks, III (EΣ 730), joined Sigma Nu's Chapter Eternal on November 8, 2008. He was 46. Starks is survived by his wife, Donna, and three daughters, Carolyn, Victoria and Anastasia. A funeral service was held Wednesday, November 12, at the First Baptist Church in Auburn, AL. He will be deeply missed.

